

Chrysanthi Unicode Version 2.2

Thank you for visiting my site and downloading the latest version of the Chrysanthi Unicode font. Please be sure to visit again soon for more updates, or if you wish to be notified when new updates come out, please email me at redneck_witchboi@yahoo.com.

This font is freeware and still very much in progress. It started out as a project to allow users to type all unicode latin characters, and has quickly grown to include greek, cyrillic, hebrew, arabic, hiragana, katakana, dlatci, chrysanthi, devanagari, tibetan, bengali, and much more. The following pages detail the characters contained in the font. For more information on how to use unicode, please refer to the Unicode standard at <http://www.unicode.org/>.

Note: This font was not created in connection with the Unicode Consortium and does not identically follow the unicode standard. Notes in the following text indicate where the Chrysanthi Unicode font deviates from the unicode standard.

A 20% grey letter (o) indicates a combining character.

Basic Latin (complete)

!	"	#	\$	%	&	'	()	*	+	,	-
.	/	0	1	2	3	4	5	6	7	8	9	:
;	<	=	>	?	@	A	B	C	D	E	F	G
H	I	J	K	L	M	N	O	P	Q	R	S	T
U	V	W	X	Y	Z	[\]	^	_	`	a
b	c	d	e	f	g	h	i	j	k	l	m	n
o	p	q	r	s	t	u	v	w	x	y	z	{
	}	~										

Latin-1 Supplement (complete)

¡	¢	£	¤	¥	¦	§	¨	©	ª	«	¬	-
®	¯	°	±	²	³	´	µ	¶	·	¸	¹	º
»	¼	½	¾	¿	À	Á	Â	Ã	Ä	Å	Æ	Ç
È	É	Ê	Ë	Ì	Í	Î	Ï	Ð	Ñ	Ò	Ó	Ô
Õ	Ö	×	Ø	Ù	Ú	Û	Ü	Ý	Þ	ß	à	á
â	ã	ä	å	æ	ç	è	é	ê	ë	ì	í	î
ï	ð	ñ	ò	ó	ô	õ	ö	÷	ø	ù	ú	û
ü	ý	þ	ÿ									

Latin Extended-A (complete)

Ā	ā	Ă	ă	Ą	ą	Ć	ć	Ĉ	ĉ	Č	č	Ď
ď	Ď	đ	Đ	đ	Ē	ē	Ĕ	ĕ	Ė	ė	Ę	ę
Ě	ě	Ĝ	ĝ	Ğ	ğ	Ġ	ġ	Ģ	ģ	Ĥ	ĥ	Ħ

ং	ং	ঃ	অ	আ	ঈ	ঐ	উ	ঊ	ঋ	ঌ	এ	ঐ
ঔ	ঔ	ক	খ	গ	ঘ	ঙ	চ	ছ	জ	ঝ	ঞ	তা
ঠ	ড	ত	থ	দ	ধ	ন	প	ফ	ব	ভ	ত্ৰ	ত্ৰ
ম	য	র	ল	শ	ষ	স	হ	়	া	ি	ী	ী
ঞ	ঠ	ড	ে	ৈ	ৌ	ৌ	্	ী	ড	ত	য়	ঞ
ণ	঵	শ	০	১	২	৩	৪	৫	৬	৭	৮	৯
ৱ	৲	৳	৴	৵	৶	৷	৸	৹	৺	৻	ৼ	৽

Gurmukhi (unavailable)

Gujarati (complete)

ँ	ं	:	अ	आ	ई	ई	उ	उ	ऋ	अ	ए	औ
ओ	ओ	औ	क	ख	ग	घ	ङ	च	छ	ज	झ	ञ
ट	ठ	ड	ढ	ण	त	थ	द	ध	न	प	फ	ब
भ	म	य	र	ल	व	श	ष	स	ह	ॠ	ॡ	ॢ
।	ि	ी	ु	ू	ृ	ॄ	ॅ	ॆ	े	ै	ॉ	ॊ
ो	ौ	्	ॎ	ॏ	ॐ	॑	॒	॓	॔	ॕ	ॖ	ॗ

Oriya (unavailable)

Tamil (unavailable)

Telugu (unavailable)

Kannada (unavailable)

Malayalam (unavailable)

Sinhala (unavailable)

Thai (unavailable)

Ogham (in progress)

Runic (complete)^{viii}

Ƶ	ƶ	Ʒ	Ƹ	ƹ	ƺ	ƻ	Ƽ	ƾ	ƿ	ƿ	ƿ	ƿ	ƿ
ƿ	ƿ	ƿ	ƿ	ƿ	ƿ	ƿ	ƿ	ƿ	ƿ	ƿ	ƿ	ƿ	ƿ
ƿ	ƿ	ƿ	ƿ	ƿ	ƿ	ƿ	ƿ	ƿ	ƿ	ƿ	ƿ	ƿ	ƿ
ƿ	ƿ	ƿ	ƿ	ƿ	ƿ	ƿ	ƿ	ƿ	ƿ	ƿ	ƿ	ƿ	ƿ
ƿ	ƿ	ƿ	ƿ	ƿ	ƿ	ƿ	ƿ	ƿ	ƿ	ƿ	ƿ	ƿ	ƿ
ƿ	ƿ	ƿ	ƿ	ƿ	ƿ	ƿ	ƿ	ƿ	ƿ	ƿ	ƿ	ƿ	ƿ
ƿ	ƿ	ƿ	ƿ	ƿ	ƿ	ƿ	ƿ	ƿ	ƿ	ƿ	ƿ	ƿ	ƿ
ƿ	ƿ	ƿ	ƿ	ƿ	ƿ	ƿ	ƿ	ƿ	ƿ	ƿ	ƿ	ƿ	ƿ
ƿ	ƿ	ƿ	ƿ	ƿ	ƿ	ƿ	ƿ	ƿ	ƿ	ƿ	ƿ	ƿ	ƿ
ƿ	ƿ	ƿ	ƿ	ƿ	ƿ	ƿ	ƿ	ƿ	ƿ	ƿ	ƿ	ƿ	ƿ

Khmer (unavailable)

Mongolian (unavailable)

Latin Extended Additional (complete)

À	á	Â	â	Ã	ã	Ä	ä	Ç	ç	Ð	ð	Ď	ď	Đ	đ		
đ	Đ	đ	Đ	đ	Đ	đ	È	è	É	é	Ě	ě	Ě	ě	Ě	ě	
Ě	ě	Ě	ě	Ě	ě	Ě	ě	Ě	ě	Ě	ě	Ě	ě	Ě	ě		
ĥ	Ĥ	ĥ	Ĥ	ĥ	Ĥ	ĥ	Ĥ	ĥ	Ĥ	ĥ	Ĥ	ĥ	Ĥ	ĥ	Ĥ	ĥ	
Ķ	ķ	Ļ	ļ	Ļ	ļ	Ļ	ļ	Ļ	ļ	Ļ	ļ	Ļ	ļ	Ļ	ļ	Ļ	ļ
ṁ	Ṁ	ṁ	Ṃ	ṁ	Ṃ	ṁ	Ṃ	ṁ	Ṃ	ṁ	Ṃ	ṁ	Ṃ	ṁ	Ṃ	ṁ	Ṃ
Ö	ö	Ö	ö	Ö	ö	Ö	ö	Ö	ö	Ö	ö	Ö	ö	Ö	ö	Ö	ö
ṛ	Ṛ	ṛ	Ṙ	ṛ	Ṙ	ṛ	Ṙ	ṛ	Ṙ	ṛ	Ṙ	ṛ	Ṙ	ṛ	Ṙ	ṛ	Ṙ
Ṡ	ṡ	Ṣ	ṣ	Ṣ	ṣ	Ṣ	ṣ	Ṣ	ṣ	Ṣ	ṣ	Ṣ	ṣ	Ṣ	ṣ	Ṣ	ṣ
Ṥ	ṥ	Ṧ	ṧ	Ṧ	ṧ	Ṧ	ṧ	Ṧ	ṧ	Ṧ	ṧ	Ṧ	ṧ	Ṧ	ṧ	Ṧ	ṧ

^{viii} These characters are mapped to the runic subset, which doesn't seem to work, and also to the Private use subset from E6A0 to E6F0.

‘H	Œ	Ɔ	ŵ	ŵ	ŵ	ŵ	ŵ	ŵ	ŵ	ŵ	’Ω	’Ω
”Ω	”Ω	”Ω	”Ω	”Ω	”Ω	ă	ā	à	a	á	ã	ã
Ă	Ā	À	À	À	’	˘	’	˘	˘	à	ñ	ñ
ñ	ñ	’E	’E	’H	’H	H	”	”	”	ı	ı	ı
ı	ı	ı	İ	Ī	Ĭ	Ĭ	“	“	”	ü	ū	ù
ù	ř	ř	ũ	ũ	Ÿ	Ÿ	’Y	’Y	’P	˙	˙	’
ŵ	ŵ	ŵ	ŵ	ŵ	’O	’O	’Ω	’Ω	Ω	’	’	’

General Punctuation (incomplete)^{ix}

‘	’	’	’	“	”	—	—	—	—		=	
‘	’	’	‰	‰	’	”	”	†	†	•	▶	•
..	...	•	‰	‰	’	”	”	†	†	”	”	<
>	⊗	!!	?	—	˘	˘	∧	**	-	/	Ē	}
?!	!?	¶	¶	¶								

Superscripts and Subscripts (complete)

0	1	2	3	4	5	6	7	8	9	+	-	=
()	n	0	1	2	3	4	5	6	7	8	9
+	-	=	()								

Currency Symbols (incomplete)^x

€	¢	€	F	£	₤	₯	Pts	Rs	₯	₯	₯	€
K	₯											

^{ix} Missing 204A.
^x Missing 20AF.

Combining Diacritical Marks for Symbols (unavailable)

Letterlike Symbols (complete)

$\frac{a}{c}$	$\frac{a}{s}$	©	°C	℄	‰	‰	ε	∂	ƒ	g	ℋ	ℳ
ℍ	h	ℏ	ℑ	ℒ	ℓ	℔	ℕ	No.	⊕	⊗	ℙ	
ℚ	ℛ	ℜ	ℝ	℞	ℙ SM	℟ ^{TEL}	™	℧	ℨ	℩	Ω	
⒪	℔	Ⓛ	ℕ	Å	ℬ	ℭ	e	e	ℰ	ℱ	ℱ	ℳ
σ	⌘	⌑	λ	7	i	⓪						

Number Forms (complete)

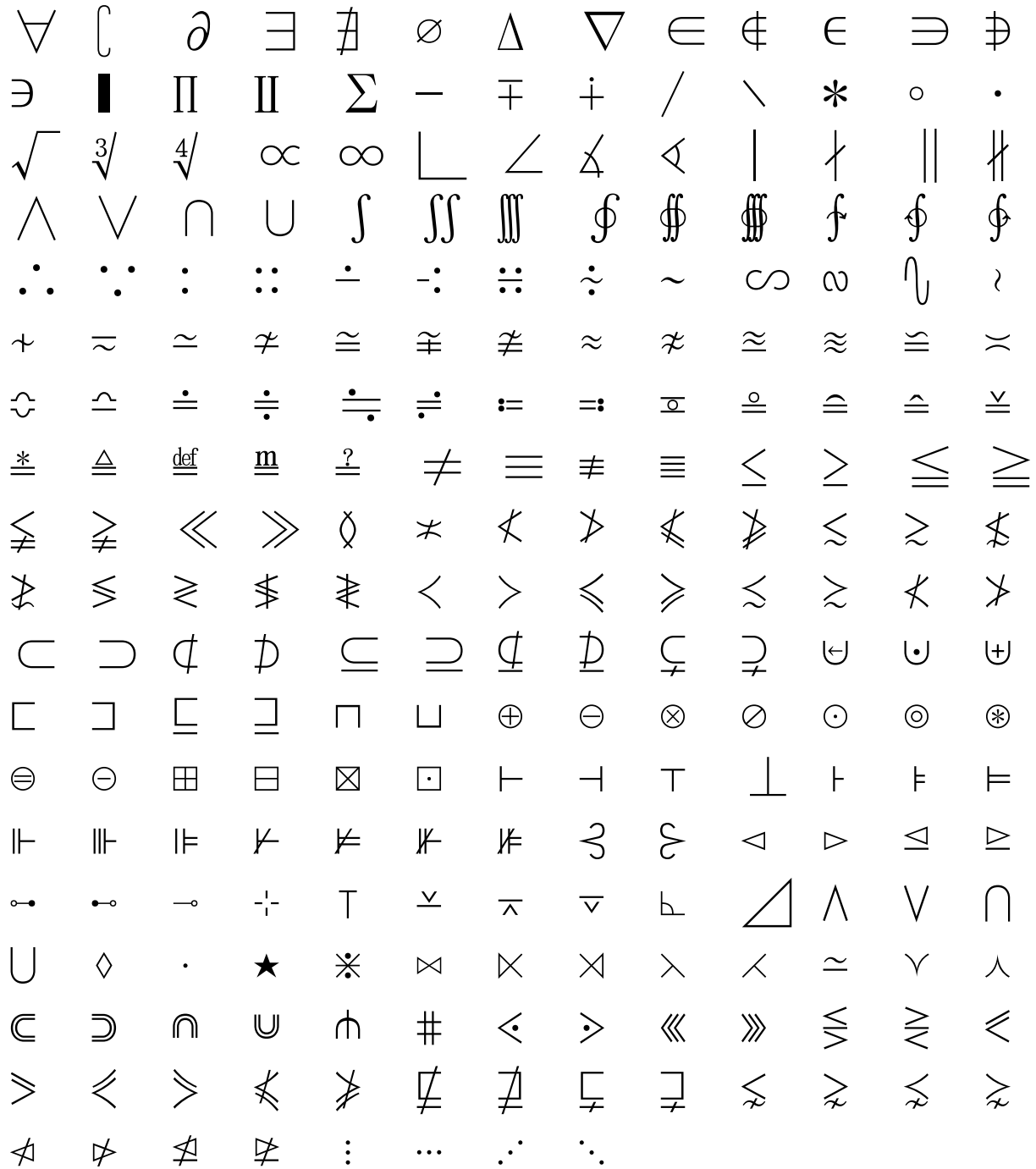
$\frac{1}{3}$	$\frac{2}{3}$	$\frac{1}{5}$	$\frac{2}{5}$	$\frac{3}{5}$	$\frac{4}{5}$	$\frac{1}{6}$	$\frac{5}{6}$	$\frac{1}{8}$	$\frac{3}{8}$	$\frac{5}{8}$	$\frac{7}{8}$	$\frac{1}{4}$
I	II	III	IV	V	VI	VII	VIII	IX	X	XI	XII	L
C	D	M	i	ii	iii	iv	v	vi	vii	viii	ix	x
xi	xii	l	c	d	m	Ⓓ	Ⓔ	Ⓕ	Ⓖ			

Arrows (incomplete)^{xi}

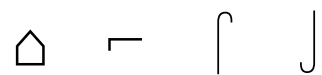
←	↑	→	↓	↔	↕	↖	↗	↘	↙	↔	↔	↻
↻	↔	↕	↔	↕	↔	↔	↔	↕	↔	↕	↕	↻
↻	↔	↕	↔	↕	↔	↔	↔	↕	↔	↕	↕	↻
↻	↔	↕	↔	↕	↔	↔	↔	↕	↔	↕	↕	↻
↻	↔	↕	↔	↕	↔	↔	↔	↕	↔	↕	↕	↻
↻	↔	↕	↔	↕	↔	↔	↔	↕	↔	↕	↕	↻
↻	↔	↕	↔	↕	↔	↔	↔	↕	↔	↕	↕	↻
↻	↔	↕	↔	↕	↔	↔	↔	↕	↔	↕	↕	↻

Mathematical Operators (complete)

^{xi} Missing 21EB - 21F2.



Miscellaneous Technical (incomplete)^{xii}



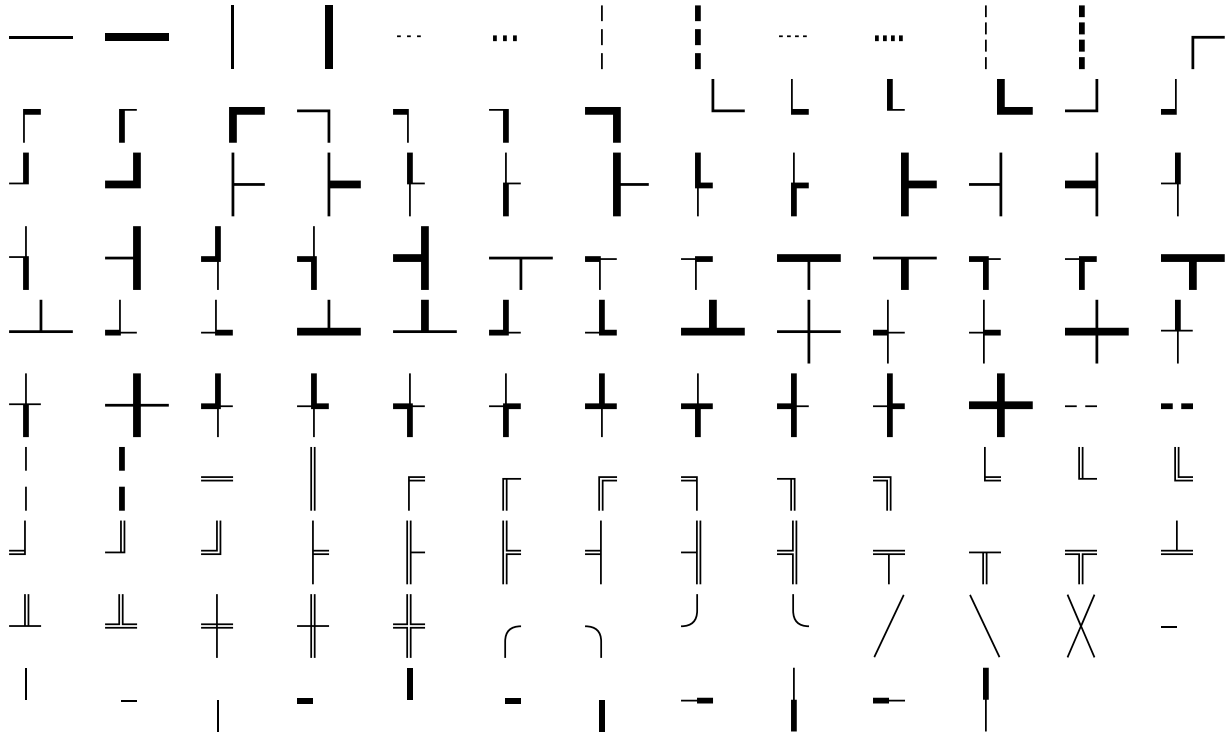
Control Pictures (unavailable)

^{xii} Status uncertain. No immediate plans to complete this section.

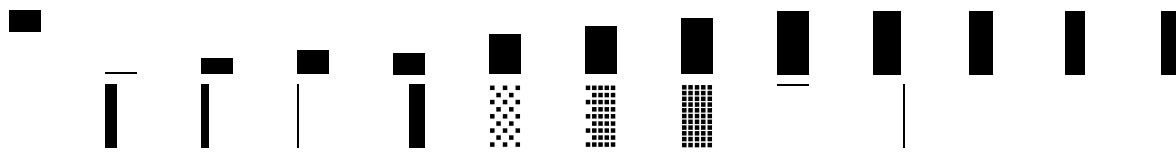
OCR (unavailable)

Enclosed Alphanumerics (unavailable)

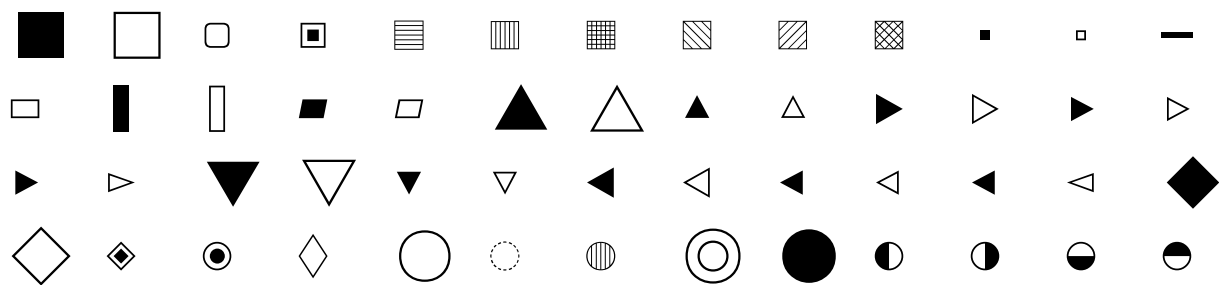
Box Drawing (complete)

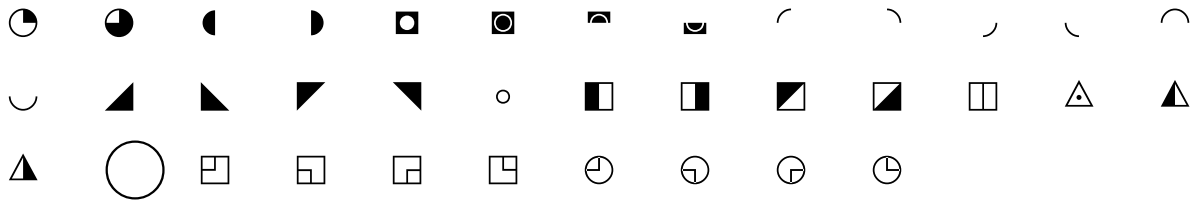


Block Elements (complete)

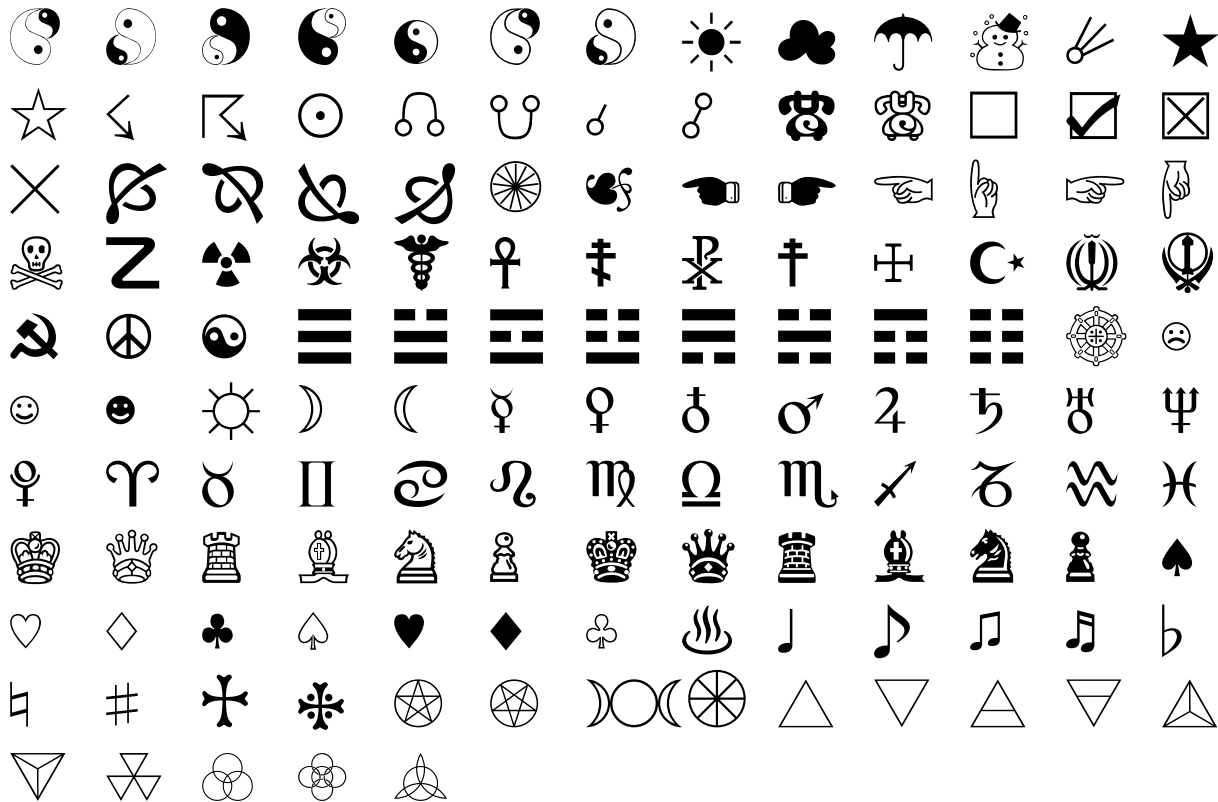


Geometric Shapes (complete)

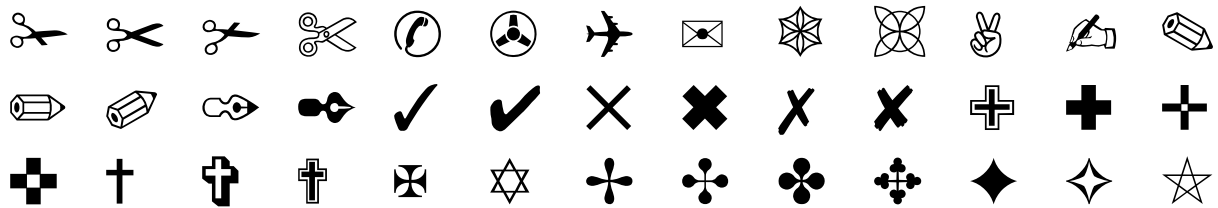




Miscellaneous Symbols (complete^{xiii} + additional)^{xiv}



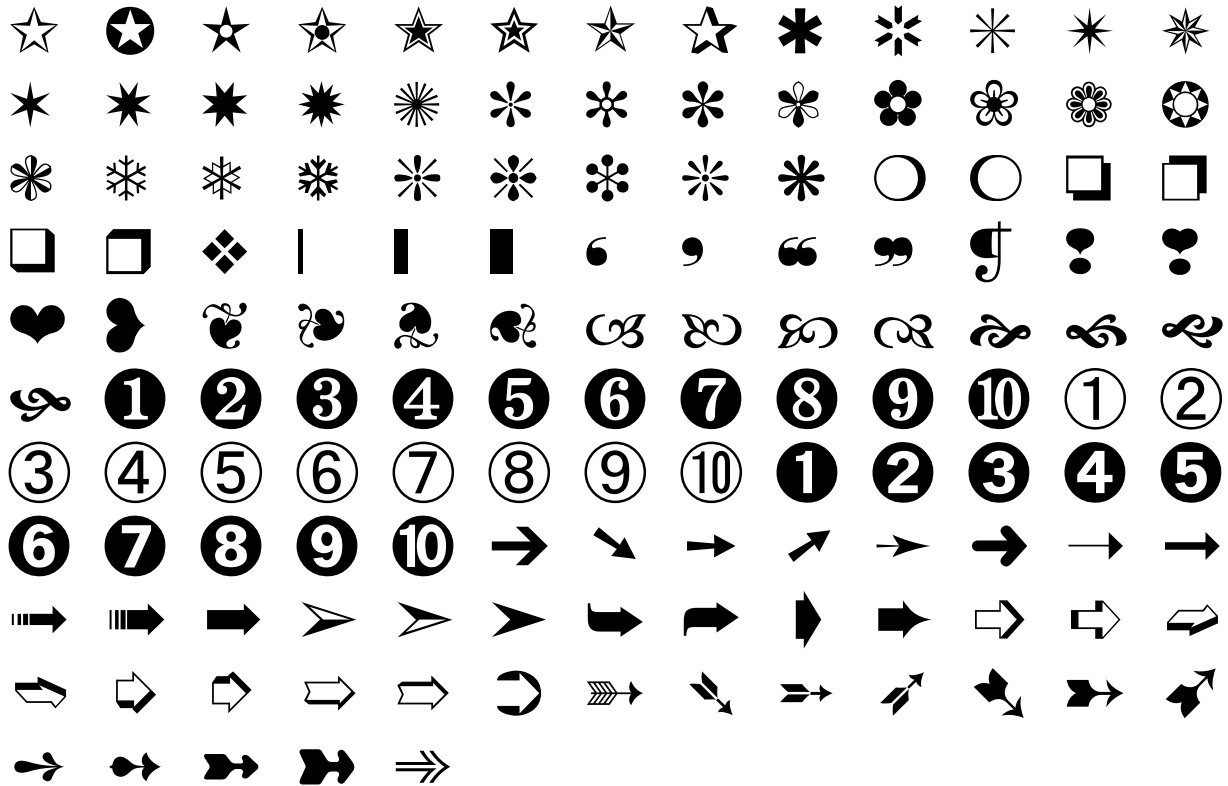
Dingbats (incomplete + additional)^{xv}



^{xiii} 2671 replaced by similar symbol.

^{xiv} Yin-yang patterns for Taoist medicine added to 25F9 through 25FF. Decorative glyphs added to 2614 through 2617. Zodiac wheel added to 2618. Private use area 2672 through 267F mapped as follows: 2672 - pentagram, 2673 - inverted pentagram, 2674 - tripple goddess moon, 2675 - dharma wheel, 2676 - fire glyph, 2677 - air glyph, 2678 - earth glyph, 2679 - water glyph, 267A - akasha glyph, 267B inverted akasha glyph, 267C - three triangles, 267D - three overlapping circles, 267E - five overlapping circles, 267F - three pointed circle.

^{xv} Left shadowed white circle mapped to 274E. Compass design mapped to 270A. Four pointed circle mapped to 270B. Pentagram mapped to 2728. 2768 and 2769 inverted versions of 2766 and 2767.



Braille Patterns (unavailable)

CJK Radicals Supplement (unavailable)

Kangxi Radicals (unavailable)

Ideographic Description (unavailable)

CJK Symbols and Punctuation (complete, but experiencing technical difficulties)

Hiragana (complete)

あ	あ	い	い	う	う	え	え	お	お	か	が	き
ぎ	く	ぐ	け	げ	こ	ご	さ	ざ	し	じ	す	ず
せ	ぜ	そ	ぞ	た	だ	ち	ち	っ	っ	づ	て	で
と	ど	な	に	ぬ	ね	の	は	ば	ぱ	ひ	び	び
ふ	ぶ	ふ	へ	べ	ぺ	ほ	ぼ	ぽ	ま	み	む	め

も や や ゆ ゆ よ よ ら り る れ ろ わ
わ ゐ ゑ を ん ぐ っ っ っ っ

Katakana (complete)

ゝ ゞ ア ア イ イ ウ ウ エ エ オ オ カ
ガ キ ギ ク グ ケ ゲ コ ゴ サ ザ シ ジ
ス ズ セ ゼ ソ ゾ タ ダ チヂ ッ ツ ズ
テ デ ト ド ナ ニ ヌ ネ ノ ハ バ パ ヒ
ビ ピ フ ブ プ ヘ ベ ペ ホ ボ ポ マ ミ
ム メ モ ヤ ヤ ユ ユ ヨ ヨ ラ リ ル レ
ロ ワ ワ ヰ エ ヲ ヱ ヲ ヱ
ヅ ・ ー 丶 丶

Bopomofo (incomplete, and experiencing technical difficulties)^{xvi}

Hangul Compatibility Jamo (unavailable)

Kanbun (incomplete, and experiencing technical difficulties)

Extended Bopomofo (unavailable)

Enclosed CJK Letters and Months (unavailable)

CJK Compatibility (experiencing technical difficulties)

CJK Unified Ideographs Extension A (unavailable)

CJK Unified Ideographs (unavailable)^{xvii}

Yi (unavailable)

Yi Radicals (unavailable)

^{xvi} Missing non-mandarin subset.

^{xvii} Some of the CJK Unified Ideographs are available in a private use area from E300 to E400, but the entire subset could not be presented due to space considerations.

𐄂	𐄃	𐄄	𐄅	𐄆	𐄇	𐄈	𐄉	𐄊	𐄋	𐄌
𐄍	𐄎	𐄏	𐄐	𐄑	𐄒	𐄓	𐄔	𐄕	𐄖	𐄗
𐄘	𐄙	𐄚	𐄛	𐄜	𐄝	𐄞	𐄟	𐄠	𐄡	𐄢

Some Common CJK Unified Glyphs^{xix}

零	一	二	三	四	五	六	七	八	九	十	百	千
萬	上		南	東	中	西	北	下	日	氣	火	木
土	金	水	陰	陽	立	夏	春	分	秋	冬	至	月
鼠	牛	虎	兔	龍	蛇	馬	羊	猴	雞	狗	豬	子
丑	寅	卯	辰	巳	午	未	申	酉	戌	亥	大	小
寒	雨	驚	蜇	清	明	穀	滿	芒	種	暑	處	白
露	霜	降	雪									

Chrysanthi Runes

中	𐄂	月	目	田	𐄈	𐄉	日	𐄊	𐄋	𐄌	几	見
九	𐄍	𐄎	人	大	夫	𐄑	木	𐄓	東	𐄕	𐄖	不
𐄘	𐄙	𐄚	𐄛	𐄜	𐄝	𐄞	𐄟	𐄠	𐄡	𐄢	𐄣	𐄤
𐄥	𐄦	𐄧	𐄨	𐄩	𐄪	𐄫	𐄬	𐄭	𐄮	𐄯	𐄰	𐄱
𐄲	𐄳	𐄴	𐄵	𐄶	𐄷	𐄸	𐄹	𐄺	𐄻	𐄼	𐄽	𐄾
☆	𐄿	𐅀	𐅁	𐅂	𐅃	𐅄	𐅅	𐅆	𐅇	𐅈	𐅉	𐅊
。	𐅋	𐅌	(

Alphabetic Presentation Forms (incomplete)

^{xix} Contains numbers, directions, seasons, elements, horary characters, zodiac animals, and characters necessary to write the names of the solar terms.

ו	וְ	וּ	וֹ	וּ	ׁ	—	ff	ff	ff	ff	ff	ff
ת	תּ	תֵּ	תִּ	תֵּ	תֵּ	תֵּ	ה	ה	ל	ם	ר	ת
ז	ז	ז	ז	ז	ז	ז	ב	ג	ד	ה	ו	ז
ח	י	ן	נ	ל	פ	ב	ס	ף	ט	צ	ק	ר
ש	ת	ו	ב	ר	ט	א						

Arabic Presentation Forms-A (incomplete)

پ	پ	پ	چ	چ	چ	ث	ك	ك	ك	گ	گ	گ
ی	ی	ی	ی	ی	ی	()	لله	ء				

Combining Half Marks, CJK Comp Forms & SFV (unavailable)

Arabic Presentation Forms-B (incomplete)

آ	أ	أ	ؤ	أ	ئ	ئ	ا	ب	ب	ب	ة
ت	ت	ت	ث	ث	ث	ج	ج	ح	ح	ح	خ
خ	خ	د	ذ	ر	ز	س	س	ش	ش	ش	ص
ط	ط	ض	ض	ظ	ط	ط	ظ	ظ	ظ	ع	ع
ع	غ	غ	غ	ف	ف	ق	ق	ك	ك	ك	ك
ل	ل	ل	م	م	م	ن	ن	ه	ه	ه	و
ی	ی	ی	ی	لآ	لآ	لآ	لآ	لآ	لآ	لآ	

Halfwidth and Fullwidth Forms (unavailable)

For requests, information, or comments, mail to redneck_witchboi@yahoo.com.

©2001 by D. Paul Aleksandri

Version 2.3 released November 27th, 2001.