

LETTERING

PLATES

1  
ABCDEFGHIJKLMNOPQRSTUVWXYZ 1234567890&

2  
A B O D E F G H I J K L M N O P Q R S T U V W X Y Z

3  
A B O D E F G H I J K L M N O P Q R S T U V W X Y Z

4  
A B O D E F G H I J K L M N O P Q R S T U V W X Y Z

4a  
A B O D E F G H I J K L M N O P Q R S T U V W X Y Z

4b  
A B O D E F G H I J K L M N O P Q R S T U V W X Y Z

4c  
A B O D E F G H I J K L M N O P Q R S T U V W X Y Z

5  
A B O D E F G H I J K L M N O P Q R S T U V W X Y Z

4d  
A B O D E F G H I J K L M N O P Q R S T U V W X Y Z

6  
abcdefghijklmnopqrstuvwxyz

7  
a b c d e f g h i j k l m n o p q r s t u v w x y z

8  
a b c d e f g h i j k l m n o p q r s t u v w x y z

9  
a b c d e f g h i j k l m n o p q r s t u v w x y z

8a  
a b c d e f g h i j k l m n o p q r s t u v w x y z

The arrow-heads indicate correction lines

1  
 ABCDEFGHIJKLMNOPQRSTUVWXYZ 1234567890& abcdefghijklmnopqrstuvwxyz  
 2  
**ABCD EFGH IJKLMN OPQRST UVVWVE** | **1234567890&** **abcde fghij klmnopq rstuvwxyz**  
 3  
 ABCDEFGHIJKLMNOPQRSTUVWXYZ 1234567890& abcdefghijklmnopqrstuvwxyz  
 4  
**ABCD EFGH IJKLMN OPQRST UVVWVE** | **1234567890&** **abcde fghij klmnopq rstuvwxyz**  
 5  
 ABCDEFGHIJKLMNOPQRSTUVWXYZ  
 6  
 WXYZ 123456789&  
 7  
**ABCD EFGH IJKLMN OPQRST UVVWVE** | **123456789&**  
 8  
**WVE** | **123456789&**  
 9  
 ABCDEFGHIJKLMNOPQRSTUVWXYZ  
 10  
 WXYZ 123456789&  
 11  
**ABCD EFGH IJKLMN OPQRST UV**  
 12  
**WVE** | **123456789&**  
 13  
 abcdefghijklmnopqrstuvwxyz  
 14  
**abcde fghij klmnopq rstuvwxyz**  
 15  
 abcdefghijklmnopqrstuvwxyz

1  
ABCDEFGHIJKLMNOPQRSTUVWXYZ  
2  
1234567890& abcdefghijklmnopqrstuvwxyz

3  
**ABCDEFGHIJKLMNORSTUVWXYZ**  
4  
**1234567890& abcdefghijklmnopqrstuvwxyz**

5  
*ABCDEFGHIJKLMNORSTUVWXYZ*  
6  
*1234567890& abcdefghijklmnopqrstuvwxyz*

7  
ABCDEFGHIJKLMNOPQRSTUVWXYZ 1234567890& abcdefghijklmnopqrstuvwxyz  
8  
**ABCDEFGHIJKLMNORSTUVWXYZ 1234567890& abcdefghijklmnopqrstuvwxyz**

9  
ABCDEFGHIJKLMNORSTUV  
10  
WXYZ 123456789&

11  
**ABCDEFGHIJKLMNORSTUV**  
12  
**WXYZ 123456789&**

13  
abcdefghijklmnopqrstuvwxyz  
14  
**abcdefghijklmnopqrstuvwxyz**

1    ABCDEFGHIJKLMNOPQRSTUVWXYZ  
2    1234567890& abcdefghijklmnopqrstuvwxyz  
3    **▲BODD70HIIANNOPOB8VUVWVE**  
4    **|2845678900A ab0000gHjllmnoppqstuvwxyz**  
5    ABCDEF70HIIANNOPOB8VUVWVE  
6    |2845678900& abcdefghijklmnopqrstuvwxyz  
7    ABCDEFGHIJKLMNOPQRSTUVWXYZ  
8    1234567890& abcdefghijklmnopqrstuvwxyz  
9    *ABCDEFGHIJKLMNPOQRSTUVWXYZ*  
10    *1234567890& aabcdefghijklmnopqrstuvwxyz*  
11    **▲BODD70HIIANNOPOB8VUVWVE**  
12    **|2845678900A ab0000gHjllmnoppqstuvwxyz**  
13    ABCDEFGHIJKLMNPOQRSTUVWXYZ  
14    |2845678900& abcdefghijklmnopqrstuvwxyz  
15    **▲BODD70HIIANNOPOB8VUVWVE**  
16    **|2845678900& aabcdefghijklmnopqrstuvwxyz**

1  
 ABCDEFGHIJKLMNOPQRSTUVWXYZ 1234567890&  
 2  
 ▲BODDEHCHIUJKNMNOBORSIHUVWVWYE 1234567890A  
 3  
 ABCDEFGHIJKLMNOPQRSTUVWXYZ 1234567890&  
 4  
 ▲BODDEHCHIUJKNMNOBORSIHUVWVWYE 1234567890A  
 5  
 abcdefghijklmnopqrstuvwxyz  
 6  
 aBoddeHCHIUJKNMNOBORSIHUVWVWYE  
 7  
 abcdefghijklmnopqrstuvwxyz  
 8  
 aBoddeHCHIUJKNMNOBORSIHUVWVWYE  
 9  
 ABCDEFGHIJKLMNOPQRSTUVWXYZ 1234567890&  
 10  
 ▲BODDEHCHIUJKNMNOBORSIHUVWVWYE 1234567890A  
 11  
 ABCDEFGHIJKLMNOPQRSTUVWXYZ 1234567890&  
 12  
 ▲BODDEHCHIUJKNMNOBORSIHUVWVWYE 1234567890A  
 13  
 abcdefghijklmnopqrstuvwxyz  
 14  
 A C G K  
 15  
 abcdefghijklmnopqrstuvwxyz M N S W  
 16  
 aBoddeHCHIUJKNMNOBORSIHUVWVWYE  
 17  
 abcdefghijklmnopqrstuvwxyz  
 18  
 aBoddeHCHIUJKNMNOBORSIHUVWVWYE  
 19  
 aBoddeHCHIUJKNMNOBORSIHUVWVWYE

# GOTHIC

(Based on Instrumental Construction)  
(See Plate 8)

52 in.



\* THE MEASUREMENTS BETWEEN THESE LETTERS GIVES A SPACING PROPORTIONAL TO THAT OF PLATE 6

GOTHIC  
(Based on Instrumental Construction)  
(See Plate 7)

A B C D E F G H I J K L M N O P Q R S

T U V W X Y Z & 1 2 3 4 5 6 7 8 9 0

*A B C D E F G H I J K L M N O P Q R S*

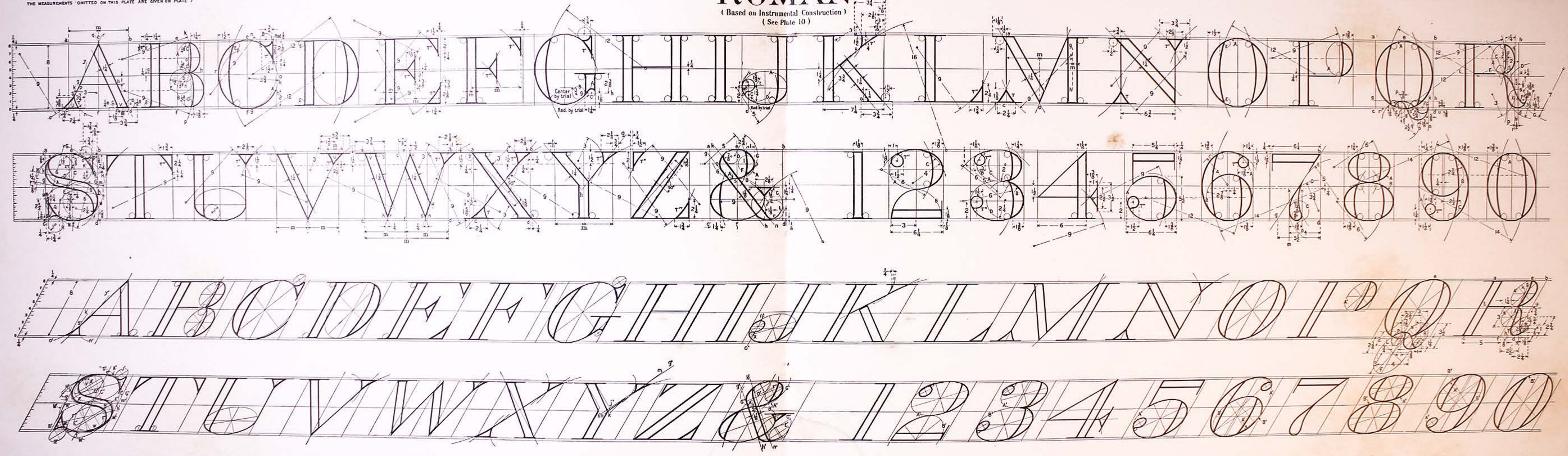
*T U V W X Y Z & 1 2 3 4 5 6 7 8 9 0*



# ROMAN

(Based on Instrumental Construction)  
(See Plate 10)

THE MEASUREMENTS OMITTED ON THIS PLATE ARE GIVEN ON PLATE 7



ROMAN

(Based on Instrumental Construction)  
(See Plate 9)

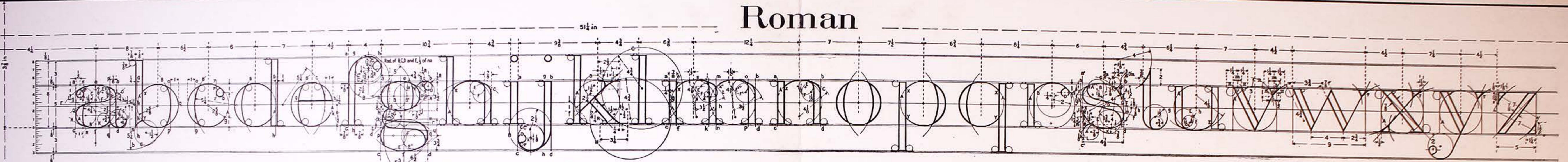
A B C D E F G H I J K L M N O P Q R S

T U V W X Y Z & 1 2 3 4 5 6 7 8 9 0

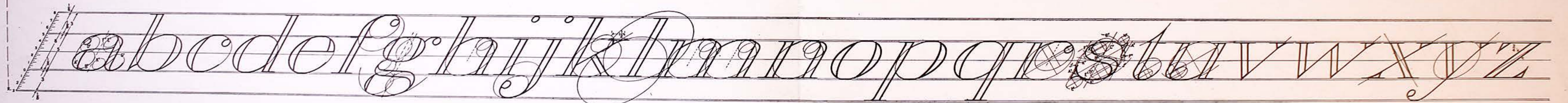
*A B C D E F G H I J K L M N O P Q R S*

*T U V W X Y Z & 1 2 3 4 5 6 7 8 9 0*

Roman



abcdefghijklmnopqrstuvwxyz



abcdefghijklmnopqrstuvwxyz

1  
 CONTOUR MAP  
 OF  
 WORCESTER  
 MASS.  
 SCALE 1 IN = 200 FT.  
 J.W. ROLAND DEL.  
 JULY 6 1890

2  
 A  
 CONTOUR MAP  
 OF  
 EASTERN POINT  
 GLOUCESTER MASS.  
 SCALE  
 JULY 28 1893 200 FEET TO AN INCH A. R. COBB del.

3  
 CONTOUR MAP  
 OF  
 WORCESTER  
 MASS.  
 SCALE 200 FT. TO 1 IN.  
 JULY 26, 1893.

4  
 CONTOUR MAP  
 OF  
 EASTERN POINT  
 GLOUCESTER  
 MASS.  
 SCALE 200 FEET TO AN INCH JULY 23, 1893  
 DRAWN BY L.H. SMITH

5  
 -CONTOUR MAP-  
 OF  
 WORCESTER •• MASS  
 SCALE 200 FT. TO AN INCH  
 L.W. CRONKHITE - DEL.  
 MAR. 3 1902.

6  
 CONTOUR MAP  
 OF  
 EASTERN POINT  
 GLOUCESTER  
 MASS.  
 SCALE 1 IN = 200 FT. BEN C. MOOERS del.  
 JULY 26, 1893

7  
 CONTOUR MAP  
 OF  
 WORCESTER MASS.  
 SCALE 200 FT. = 1 INCH  
 JULY 26, 1893.

8  
 CONTOUR MAP  
 OF  
 EASTERN POINT  
 GLOUCESTER, MASS.  
 DRAWN BY W.D.W. VOSBURY  
 JULY 26, 1893.  
 SCALE TWO HUNDRED FEET TO AN INCH

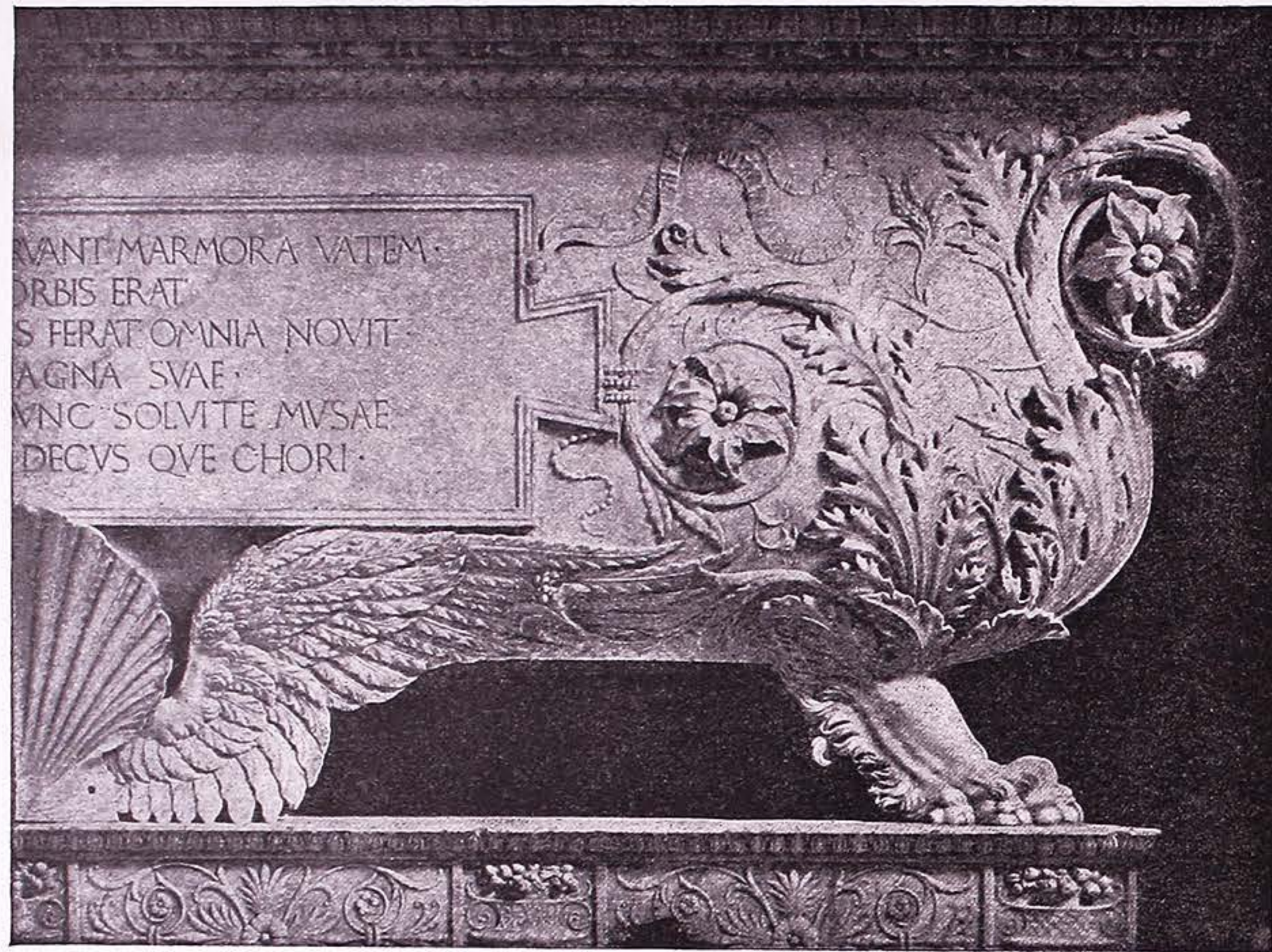
9  
 CONTOUR MAP  
 OF  
 WORCESTER MASS  
 SCALE 1 IN. = 200 FT. C.R. ADAMS DEL.  
 JULY 26, 1893.

10  
 CONTOUR MAP  
 OF  
 WORCESTER, MASS.  
 SCALE 200 FT. = 1 IN.  
 JULY 26 1893

11  
 CONTOUR MAP  
 OF  
 WORCESTER MASS.  
 SCALE 1 IN. = 200 FT. JULY 26, 1893  
 F.C. LUTZE DEL.

12  
 CONTOUR MAP OF  
 WORCESTER  
 MASS.  
 SCALE 1 IN = 200 FT — JULY 26, 1893  
 V. H. PAQUET

1



VANT MARMORA VATEM  
ORBIS ERAT  
S PERAT OMNIA NOVIT  
AGNA SVAE  
VNC SOLVITE MVSAE  
DECVS QVE CHORI

Tomb of Carlo Marsuppino, S. Croce, Florence. From Photograph.

3

M·TROIANIVS  
M·F·MARCELLVS  
LVC·AVG·MIL·  
COH·X·PR·S·  
SCIPIONIS·  
MEN·LIB·VIX·  
AN·XXV·M·VIII  
MIL·AN·V·M·VII·  
FAC C·  
L·MAGIVS  
ADEIANVS·L·  
C·IVLIVS·  
TIBERINVS  
AMICI·

From tombs of Pretorian soldiers, Rome, Piranesi.

4

M·PACCIVS  
M·F·IVLAVITVS  
SCALLABI·MIL  
COH·VI·PR·  
IVL·MIL·ANN·  
V·VIX·ANN·XXX·  
L·VALERIVS  
COM MANIPVLAR·  
ET·MVNICEPS  
AMICO·DE SE·B·M·  
POSVIT·

2

Slightly reduced.

M·VALERIVS·MESSALLACORVINVS  
PRV·TILIVS·LVPVS·L·IVNIVS·SILANVS  
L·PONTIVS·MELA·D·MARIVS  
NIGER·HEREDES·C·CESTI·ET  
L·CESTIVS·QVAE·EX·PARTE·AD  
EVM·FRATRIS·HEREDITAS  
M·AGRIPPAE·MVNERE·PER  
VENIT·EX·EA·PECVNIA·QVAM  
PRO·SVIS·PARTIBVS·RECEPER  
EX·VENDITIONE·ATTALICOR  
QVAE·EIS·PER·EDICTVM·AEDILIS  
IN·SEPVLCRVM·C·CESTI·EX  
TESTAMENTO·EIVS·INFERRE  
NON·LICVIT

From a pedestal, Capitoline Museum, Piranesi.

INSCRIPTIONS FROM "LE ANTICHTÀ ROMANE," PIRANESI, ROME, MDCCLVI

1  
Original 4 3/4 x 20 inches.

GRATIANI·TRIVM·FALIS·PRINCIPIS·PONT·EM·AET·ERNITATE·AVGVSTI·NOMINIS  
CONSEGRATVM·IN·VSV·SENATVS·POPVLIOVEROMANI·D·DD·N·N·VALENTINIANVS  
VALENS·FI·GRATIANVS·VICTORES·MAXIMI·AC·PERENES·AVGVSTI·IN·COHARI

From the Ponte Cestius, Rome.

2  
Original 7 1/2 x 11 1/4 inches.

LIBERT·ET  
FAMILIAE  
L·ARRVNTI·L·F  
TER

From the sepulchral chamber of the Arruntii.

3  
Slightly Reduced.

M·PLAVTIVS·M·F·AN  
SILVANVS  
COS·VII·VIR·EPVLON  
HVIG·SENATVS·TRIVM·FALIA  
ORNAMENTA·DECREVIT  
OB·RES·IN·ILYRICO  
BENE·GESTAS  
LARTIA·CN·F·VXOR  
A·PLAVTIVS·M·F  
VRGVLANIVS  
VIXIT·ANN·IX

From the tomb of the Plautii at Ponte Lucano.

4  
Slightly Reduced.

OB·LICIO·L·F·BIBVLO·AE  
VIRTVTI·QVE·CAVSSA·  
CONSVLIC·P·OT·VLIC·V  
MONVMENTO·QVO·IP  
EIVS·IN·FERRENT·V·BLI

Portion from the tomb of C. Poplicius, Rome.

