

[54] FONT OF TYPE

[76] Inventor: Leonard W. Wendling, #161 River Forest Village, Punta Gorda, Fla. 33950

[**] Term: 14 Years

[21] Appl. No.: 318,947

[22] Filed: Mar. 6, 1989

[52] U.S. Cl. D18/24; D18/29; D18/30; 101/399

[58] Field of Search D18/24, 25, 26, 27, D18/28, 29, 30, 31, 32, 33

[56] References Cited

U.S. PATENT DOCUMENTS

D. 11,955	8/1880	Zeese	D18/29
D. 12,111	1/1881	Rogers	D18/29
D. 12,492	9/1881	Giesecke	D18/29
D. 12,493	9/1881	Giesecke	D18/29
D. 14,885	3/1884	Giesecke	D18/29
D. 16,643	4/1886	Ruthven	D18/29
D. 39,466	8/1908	Robinson	D18/29
D. 39,467	8/1908	Robinson	D18/29
D. 39,976	5/1909	McComb	D18/29
D. 51,373	10/1917	Gaunt	D18/24
D. 51,374	10/1917	Gaunt	D18/24
D. 97,155	10/1935	Chernow	D18/24

D. 97,156	10/1935	Chernow	D18/24
D. 97,432	11/1935	Chernow	D18/24
D. 97,840	12/1935	Chernow	D18/24
D. 117,443	11/1937	Bickner	D18/24
D. 144,979	6/1946	Owen	D18/29
D. 212,408	10/1968	Fishback	D18/29
D. 221,718	8/1971	Fishback	D18/29
3,444,319	5/1969	Artzt et al.	D18/26
4,315,748	2/1982	Frascara et al.	D18/29

OTHER PUBLICATIONS

Alphabet Thesaurus, vol. 2; E. Rondthaler, Editor; p. 861, Example 'XX 1472 and 'XX 0491-1; p. 685 ex. 'XX 1472-4; Reinhold Publishing Corp; copyright 1960; 2nd printing 1970.

Letraset-Graphics Art Materials Reference Manual 1983; p. 134 Example-Baby Teeth; p. 76 Example Futura Black; p. 54 Example Compacta Bold Outline.

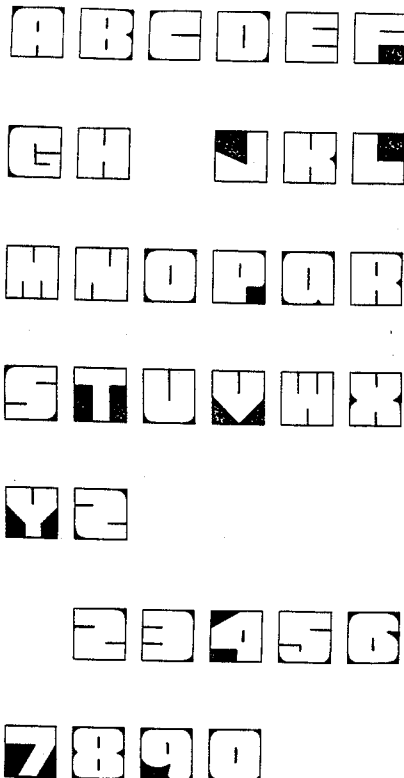
Primary Examiner—James R. Largen
Assistant Examiner—Cathy Anne MacCormac
Attorney, Agent, or Firm—Frank A. Lukasik

[57] CLAIM

The ornamental design for a font of type, as shown and described.

DESCRIPTION

The FIGURE is a face view of a font of type showing my new design.



A B C D E F

G H I J K L

M N O P Q R

S T U V W X

Y Z

2 3 4 5 6

7 8 9 0