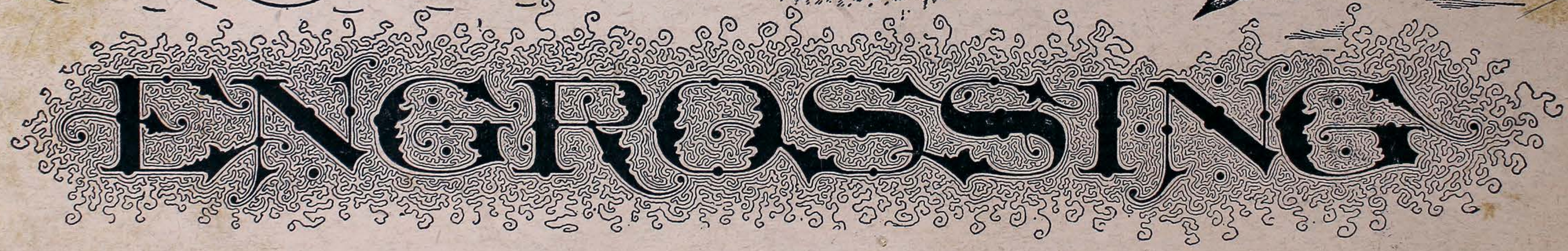
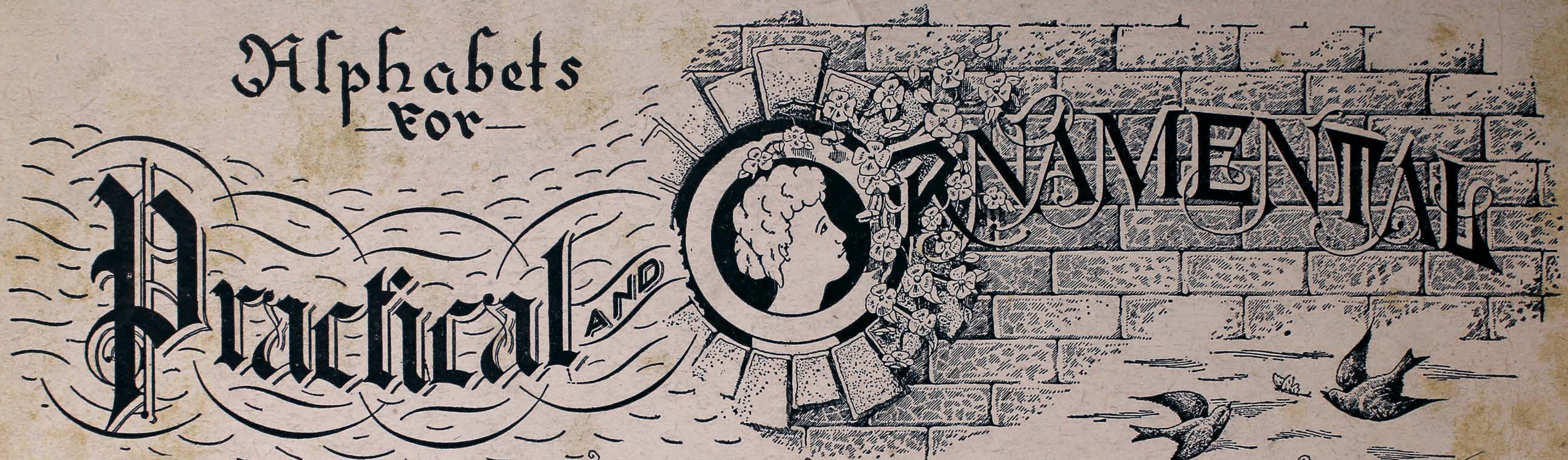


Alphabets
— For —



VARIETY STYLES

WHEREAS  **LETTERING** IS A **Practical** SUBJECT
 **Resolved** 
That we work earnestly to acquire it.

LESSONS

IN

Plain and Ornamental

LETTERING

A TEACHER'S GUIDE

and for use in Schools and Colleges, Public and Private, where a variety of useful lettering is sought. ∴ Also for penmen and home learners.

Edited and Published by
C. W. JONES, *Author*
"American Method of Business Writing"
224 Main Street, BROCKTON, MASS.

Easy Marking Alphabet.

ABCDEFGHIJKLMN OPQRSTU VWXYZ
1 2 3 4 5 ————— 6 7 8 9 0
abcdefghijklmno pqrstuvwxy z

Plate 1. The above alphabet is not only used by penmen who are skillful in the use of fine pens, but is very easily learned if properly taught to students of business colleges and other schools. The alphabet can be made easily with any writing pen or with a stub pen. It is rapid and effective, and comparatively easy. It is all made with the downward strokes slanting to the left, and the strokes are all similar. The paper should be held straight in front of you, and the penholder pointing along the arm to the elbow. Use a combined finger and arm movement, letting the hand rest and slide upon the side. Practice entire alphabet until you are able to make it well. Be patient, persevering, ambitious, careful and critical, and you will learn this alphabet in a very short time.

2

ABCDEFGHIJKLM &
NOPQRSTU VWXYZ.,
abcdefghijklmno pqr s
tuvwxyz, 1234567890 &

Plate 2. The above alphabet is similar to Plate 1, but is made with a broad pointed pen instead of the common one. Use a Number 2 or 2½ pen for this alphabet, and you will be surprised how quickly you can learn to write it well.

3

A B C D E F G H I J K L M N O P Q
R S T U V W X Y Z, 1 2 3 4 5 6 7 8 9 0 \$.
a b c d e f g h i j k l m n o p q r s t u v w x
y z, & For ^{THE} Western Penman 1900.

Plate 3. This alphabet is exactly like Plate 2, with the exception that it is made with the double-pointed pen instead of the solid marking pen. If you have mastered Plate 2, this alphabet is very easily made. Care should be taken to get the rounding turns as indicated on top of some of the letters.

4

A B C D E F G H I J K L M N O P Q
R S T U V W X Y Z, & Curtis. y z
a b c d e f g h i j k l m n o p q r s t u v w x.

Plate 4. This alphabet, as you will observe, differs just a little from Plates 2 and 3; the only difference being that it is perpendicular instead of slanting to the left. It would be well to have perpendicular lines as guide lines, so as to get the downward strokes straight. This alphabet will be found just as easy as the ones in the previous plates. The most effective work can be done by copying the entire alphabet, over and over, until you have it perfect.

5

A B C D E F G H I J K L M N O P Q R S T U V

W X Y Z & - A B D E G H J M N Q S T W

A B C D E F G H I J K L M N O P Q R S T U V W X Y Z - & COMPANY.

A STYLE OF LETTERING FOR MARKING PLANS, SHOW
CARDS, ADVERTISING SIGNS, AND FOR ALL OTHER
PURPOSES WHERE A PLAIN, RAPID LETTER IS REQUIRED

Plate 5. This alphabet consists of the plain letters made on the slant to the right, and is made with a No. 4 or 4½ marking pen or with a common writing pen. The very small letters look better made with a common writing pen. After you have mastered the previous alphabets you will write this one almost perfect the first time. Practice with care, and the results will be pleasing.

6

abcdefghijklmnopqrstuvwxyz

A B C D E F G H I J K L M N O P Q R S

1 2 3 4 5 6 T U U W X Y Z 6 7 8 9 0.

Plate 6. This alphabet differs just a little from Plate 4. The difference is that it is made slanting to the right, and the paper is held in the proper right position while making it. Care should be taken to make the rounding turns in the letters at the top as indicated. If the paper and hand are held properly, this alphabet will be found quite easily mastered.

7

A B C D E F G H I J K L M N O P Q
 R S T U V W X Y Z &., \$ 1 2 3 4 5 6 7
 8 9 0., abcdefghijklmnopqrstuvwxyz
 xy yz &.

Plate 7. Practice the entire alphabet through several times, and you will be surprised at the rapid advancement you are making on this style of writing. If any of the letters bother you, practice on them separately, making several lines of each.

A B C D E F G H I J K L M N O P
 P Q R R S T U V W X Y Y & M N V
 a b c d e f g h i j k l m n o p q r s t u v w x
 y z - a d e e g h m p r s t u x -
 A B C D E F G H I J K L M N O P Q R S T U V W X Y Y Z & -

Plate 8. This alphabet is made with a marking pen, No. 4 or 4½. The lower line is made with a common pen. The alphabet can be made with any size marking pen, and is very effective for advertising purposes. It would be well in practicing the words in this lesson to have your paper ruled for the headlines of the small letters, making the *l*, *h*, *k* and *f* double the height of the other letters. After you have learned to write all the alphabets fairly well, you will not find this one a very hard one to master. Careful, thoughtful practice will bring the desired results.

abcdefghijklmnopqrstuv
 wxyz. 1234567890;?
 ABCDEFGHIJKLMNOP
 QRSUVWXYZ &

Plate 9. This alphabet is quite similar to Plate 4, made perpendicular with a straight appearance at the top of most of the letters. It might be properly termed the Semi-Block Marking Alphabet. Practice this alphabet the same as you have practiced others, and the result will be pleasing.

ABCDEFGHIJKLM

NOPQRSTUVWXYZ

abcdefghijklmnopqrs

vwxyz. 1234567890;. ,

Plate 10. This plate is just a little different from Plate No. 6, which slants in the same way. The difference is the square effect of the letters at the top. This is done by placing the pen on the paper and moving it a little to the right before descending.

A B C D E F G H I J K L M N
 O P Q R S T U V W X Y Z &
 a b c d e f g h i j k l m n o p q r s t u v w x y
 z - fgh - 1 2 3 4 5 6 7 8 9 0 - 1 2 3 4 5 6 7 8 9 0.

Plate 11. This alphabet is the engrosser's text, and is used by all penmen and pen artists for body work of engrossing. The capitals are modified round hand, and the small letters are very much similar to the German text. It will require quite a little more care and attention in learning this alphabet than the previous ones. A number 2 or 2½ pen is better for this style of lettering, although it can be made with any number.

Arlington Brentwood Courty Dwigkt Eastkampton
 Fairhaven Guinea Humboldt Imogene Kuppenheim
 Lambton Winturn Norumbega Overland Paysor
 Queenstown Remington Sumner Trinidad Urions
 Verona Williamsburgh Xylophone Young & Zinn
 a b c d e f g h i j k l m n o p q r s t u v w x y z - a a a b b b c c c d d d -

Plate 12. In this plate we have 25 words beginning with the capital letter. This will give a practical working of plate No. 11. It would be well to practice each word several times, making your work just a little larger than it is in the copies, using a No. 2 or 2½ pen. The work in this plate is smaller than the original copies were before the engraving was done.

A B C D E F G H I K L M N
 O P Q R S T U V W X Y Z
 a b c d e f g h i k l m n o p q r s t u v w x y z

Plate 13. This style of lettering is used a great deal in filling in names in diplomas. It is quite easily made, as most of the letters are made with curves. If you have mastered the principles of this alphabet, it will be quite easy to execute. Practice the entire alphabet of capitals quite a number of times, and you will be surprised at the improvement you have made.

14

Aurelius Benjamin Chamberlain Duntou
 Edwin Franklin Grant - Harry Ives -
 Knox - Lane Municipal November Or.

Plate 14. In this plate we are giving fourteen words for practice. Practice each one separately with a number 2 or 2½ pen, being careful to get your work as near like the copy as you possibly can.

Palmer Quint - Ransom Smith; Trint
 Union Verona Warren X Young Jim

Plate 15. Work on this lesson the same as Plate 14, doing your best to keep the small lettering uniform, both in spacing and size.

15

A B C D E F G H I J K L M
 N O P Q R S T U V W X Y Z
 a b c d e f g h i j k l m n o p q r s t u

Plate 16. The Old English Text is the most universally used, and is therefore well worth mastering. Study it closely to discover the peculiar characteristics in the form of beginnings and endings, and you will learn to admire and appreciate it. It is used more extensively in lettering names on diplomas, engrossing resolutions, testimonials and memorials than any other. Practice the words in the Plate 17 below, which will give you a practical working of most of the capitals and small letters of the alphabet.

Fannie George Harry J. Jameson -
 Katie Lydia Mason - Nora Olive Hoe
 Quest - Rome Smith Thorndike Union
 Verona Wotton Xerxes Young Zachary
 Ricker School - Academy of Business.

Plate 17.

Sylvan Text.

A B C D E F G H I J K L M N O P Q R S T U V W X Y Z
a b c d e f g h i j k l m n o p q r s t u v w x y z

Plate 18.

A B C D E F G H I J K L M N
O P Q R S T U V W X Y Z

Plate 19.

A B C D E F G H I J
K L M N O P Q R S
T U V W X Y Z &
a b c d e f g h i j k l m n o p q r s t u v w

Plate 20.

— * X Y Z * —

A B C D E F G H I K
L M N O P Q R S T
* U V W X Y Z *

abcdefghijklmnopqrstuvwxyz
* u v w x y z *

Plate 21.

A B C D E F G H I J
K L M N O P Q R S
T U V W X Y Z &

abcdefghijklmnopqrstuvwxyz
12345 * wxyz * 67890

Plate 22.

A B C D E F G H I J K L M N O
P Q R R S T U V W X Y Z
abcdefghijklmnopqrstuvwxyz 1234567890

Plate 23.

Modified Saxon.

A B C D E F G H I J K L M N O P Q R S T U V W X
abcdefghijklmnopqrstuvwxyz & .

Plate 24.

A B C D E F G H I J,
K L M N O P Q R S
T U V W X Y Z & &

Plate 25.

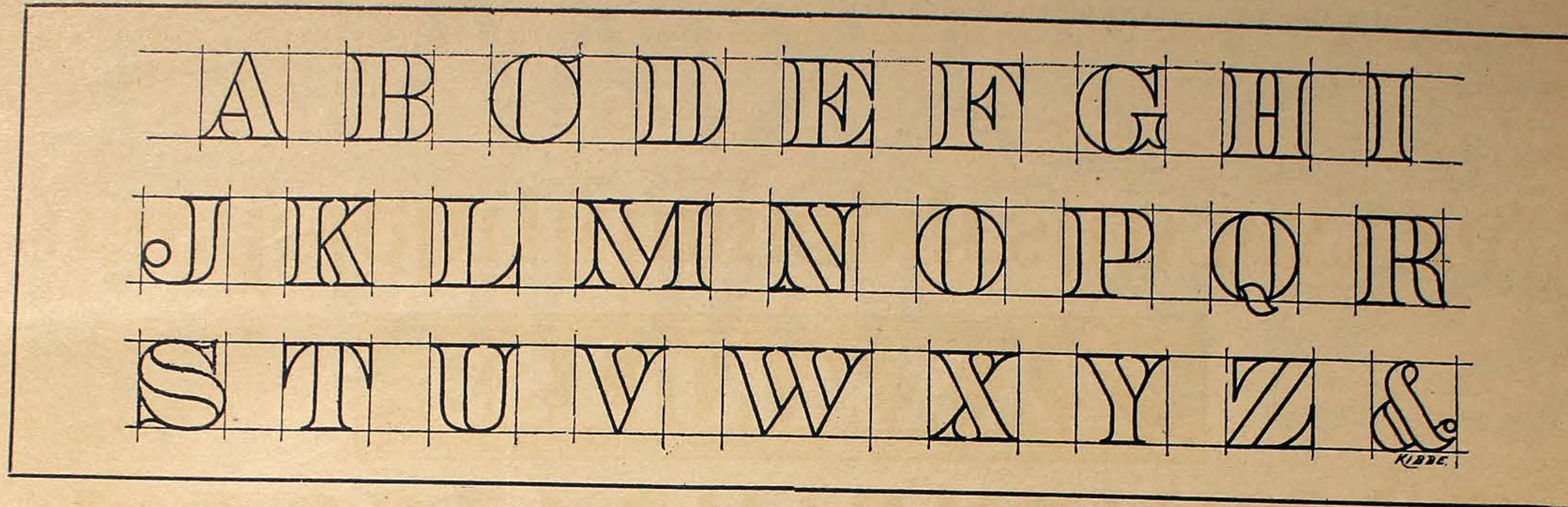


Plate 26. In this plate the plain letters must be outlined with a pencil first, before filling in with ink. It would be well to outline this entire alphabet as it appears, then fill it in with ink before commencing on Plate 27. Outline the letters in Plate 27 with pencil any desired size first, before filling them in with ink.



Plate 27. Outline this alphabet about two or three times larger than the size given in the plate. Then fill it in with the common pen. It would be well to try a few of the letters the same as the second line of capitals, filling in around the capitals with ink, leaving the shape of the letters white.

A B C D E F G H I J K L M
N O P R S T U V W X Y Z
a b c d e f g h i j k l m n o p q r s t
u v w 1 2 3 4 5 6 7 8 9 0 x y z.

Plate 28. Outline this alphabet with pencil, and fill in as previous instructions, being careful to get smooth work.

26

ROMAN
A B C D E F G H I J K
1 2 3 4 5 L M N O P 6 7 8 9 0
Q R S T U V W X Y Z &

Plate 29. Outline this alphabet with pencil first, and then fill in as indicated in the first and second lines. A great variety of letters can be made by the different methods of filling them in.

27

ABCDEFGHIJKLMNOPQRSTUVWXYZ &
abcdefghijklmnopqrstuvwxyz

Plate 30. This alphabet can best be made with a stub pen, and is very rapidly and easily executed.

*ABCDEFGHIJKLMNOPQRSTUVWXYZ &
abcdefghijklmnopqrstuvwxyz
ABCDEFGHIJKLMNOPQRSTUVWXYZ &*

Plate 31 The first two lines of this alphabet are made with a common pen. The last line with a stub pen. You will find it to be quite easily made and very practical.

28

**ABCDEFGHIJKLMNOPQRSTUVWXYZ
TUVWXYZ & \$1234567890
abcdefghijklmnopqrstuvwxyz**

Plate 32. Pencil this alphabet first, any size desired, then fill in with common pen as previously instructed.

ABCDEFGHIJKLMNOPQRSTUVWXYZ &
abcdefghijklmnopqrstuvwxyz

Plate 33. This alphabet is made with a small marking pen or a stub pen, and is very much similar to Plate No. 8. It can also be made with any style marking pen, and is a good style for show window cards.

29



Plate 36. Carefully outline this alphabet with pencil before drawing the heavy outside lines. After all the lines are properly drawn, stipple the letters as indicated. That is done by striking the pen point on the paper.

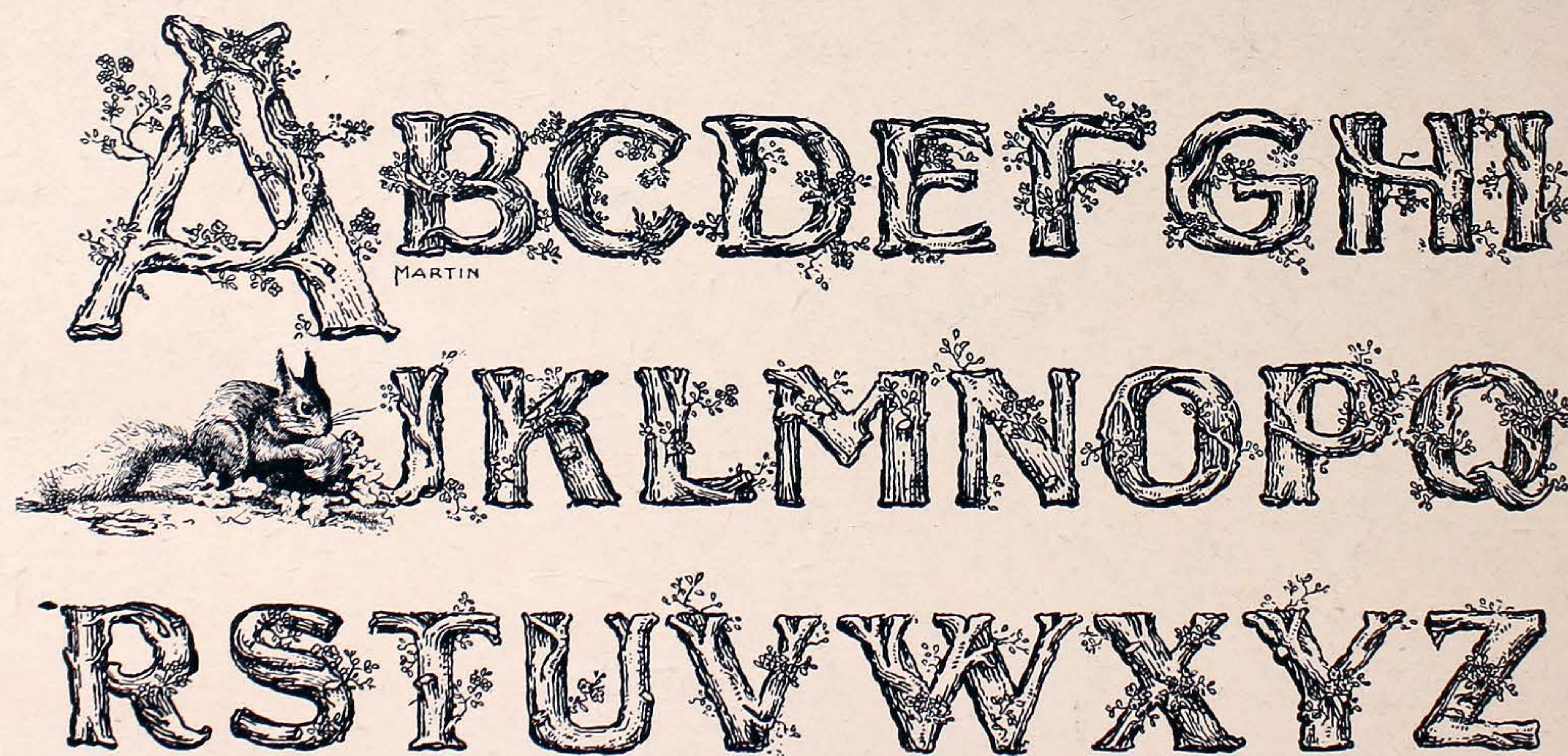


Plate 39. Outline the alphabet with pencil first, then finish the alphabet by making the lines as indicated in the letter to represent a rustic effect.

12345 Old English. 67890
A B C D E F G H I J K L M N
O P Q R S T U V W X Y Z
a b c d e f g h i j k l m n o p q r s t u v w x y z